

GET A JUMP START ON HIGHER EDUCATION PLANNING!



Jr. Jump Start
*Help your student prepare
to reach their goals!*



William Lindsey
Manager
717.720.1529
wlindsay@pheaa.org



MARISA RODRIGUEZ
717.720.1529
marisa@pheaa.org
SOUTHWEST REGION
Chester, Columbia,
Delford, Ft. Penn,
Jefferson, Madison, and
Meherrill Counties



AMY RUBIN
717.720.1529
arubin@pheaa.org
SOUTHWEST REGION
Chester, Erie, Harrow,
and Warren Counties



MARISA RUBIN
717.720.1529
marisa@pheaa.org
SOUTH CENTRAL REGION
Berks, Carbon,
Clinton, Columbia,
Lebanon, Lancaster,
Lycoming, Monroe,
Northampton, North
Sussex, and Schuylkill
Counties



LINDA PACEWICZ
717.720.1529
lpacewic@pheaa.org
SOUTH CENTRAL REGION
Berks, Lancaster,
Carbon, Lehigh,
Columbia, Monroe,
Franklin, Schuylkill,
Northampton, North
Sussex, and Schuylkill
Counties



MICHAEL REUTER
717.720.1529
mreuter@pheaa.org
SOUTH CENTRAL REGION
Berks, Lehigh,
Montgomery, and
Northampton Counties



FRANCES MCKEOWN
717.720.1529
fmckeow@pheaa.org
SOUTH CENTRAL REGION
Berks, Columbia, and
Montgomery Counties



KIMBERLY MCCARTY
717.720.1529
kmcarty@pheaa.org
LANCASTER COUNTY



JEFF PAPP
717.720.1529
jpapp@pheaa.org
LANCASTER COUNTY



MARISA RODRIGUEZ
717.720.1529
marisa@pheaa.org
NORTHWEST REGION
Allegheny, Blair,
Greene, and Lawrence
Counties



DEBORAH KRAFT
717.720.1529
dkraft@pheaa.org
NORTHWEST REGION
Allegheny, Blair,
Greene, and Lawrence
Counties



JUSTIN FRENKO
717.720.1529
jfrenko@pheaa.org
NORTH CENTRAL REGION
Berks, Carbon,
Holtzman, and Schuylkill
Counties



JEFF MEYER
717.720.1529
jmeyer@pheaa.org
NORTH CENTRAL REGION
Blair, Franklin, Fulton,
Huntingdon, Lycoming,
Schuylkill, and
Washington Counties

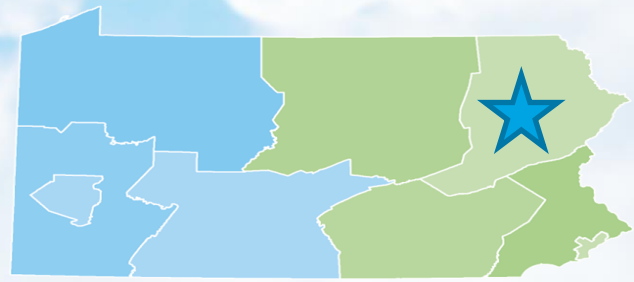


MARISA RODRIGUEZ
717.720.1529
marisa@pheaa.org
NORTH CENTRAL REGION
Berks, Lancaster, and
Lebanon Counties



FRANCES MCKEOWN
717.720.1529
fmckeow@pheaa.org
NORTH CENTRAL REGION
Adams, Cumberland,
Dauphin, Perry, and
York Counties

Your presenter



Linda Pacewicz

Higher Education Access Partner
Northeast Region

PA Higher Education Assistance Agency
(PHEAA)

570-592-1209

lpacewic@pheaa.org



Why think ahead ?

- ✓ *Time goes by quickly*
- ✓ *Better prepared*
- ✓ *Organized*
- ✓ *Make informed decisions*
- ✓ *Respond, instead of React*
- ✓ *Broaden opportunities*
 - ✓ *80% of jobs today require training*



Failing to Plan, is Planning to Fail

THE PATH TO PAYING FOR COLLEGE

FILE THE FAFSA® AND COMPLETE THE PA STATE GRANT FORM.

File the Free Application for Federal Student Aid (FAFSA) at FAFSA.gov. The information in this application is used to determine most of your aid package and should be completed as soon as possible after it becomes available **October 1** of your senior year in high school.



Where to start?

- Researching
- Understanding what's expected
- Narrowing choices
- Being ready for Senior year decisions



EDUCATION PLANNER
Visit Educationplanner.com to fully research school and options first.



RESEARCH, VISIT AND APPLY TO SCHOOLS.

Visit collegecost.ed.gov and MySmartBorrowing.org to see how much a degree will cost at your selected schools and calculate your expected student debt.

Start Thinking About Life After High School

Explore careers that interest you.

Search for your perfect school.

Learn about student aid.

Find grants or scholarships.

Plan a campus visit.



What's the Easiest Way for You to Learn New Information?

You're just a few questions away from finding out.

START NOW ▶

for **Students**



Making decisions about colleges and careers can seem overwhelming, especially when you are young. If you are feeling unprepared, know that you are not alone. We're here to help.

for **Parents**



We make it easy for you to understand college costs, the admissions process, and student aid as your child transitions from high school, to college, to the "real" world.

for **Counselors**



EducationPlanner is a great tool to get your middle school and high school students ready for life beyond high school. Encourage them to discover their interests and explore their options.

Where do I start?

Assess your interests, skills and ambitions

Understand the education and workforce demands

What might you earn?

How much will you spend on education and/or training?

Determine your best options

Build a plan to arrive at your destination

Find Careers

Career Planning Checklists

Find Careers

- Career Clusters Activity
- Which Careers Match Your Skills?
- Career Search
- Career Videos
- Hot Jobs for the Future
- It's Not All About Money
- Schools for Your Career

Get Experience

Explore Salary and Pay

Preparing for School

Paying for School

Self-Assessments

Ask a Counselor

Explore the limitless options.

Select a career that is compatible with your outlook and your vision of the future.

▶ **Career Clusters Activity**

View career categories, prioritized just for you, based on your interests and abilities.

▶ **Which Careers Match Your Skills?**

Think about the things you are good at doing, then find careers that match those skills.

▶ **Career Search**

Look up careers that interest you and read what each one is all about.

▶ **Career Videos**

Take a peek at what you may be doing when you're on the job.

▶ **Hot Jobs for the Future**

Discover occupations that are likely to have more job openings in the future.

▶ **It's Not All About Money**

Choose a job that you genuinely like to do.

▶ **Schools for Your Career**

Find the best schools for the major or career that interests you.

Explore
interests

Research
Careers
to
understand
what it's
about

Career Planning

Career Planning Checklists

Find Careers

- Career Clusters Activity
- **Which Careers Match Your Skills?**
- Career Search
- Career Videos
- Hot Jobs for the Future
- It's Not All About Money
- Schools for Your Career

Get Experience

Explore Salary and Pay

Preparing for School

Paying for School

Self-Assessments

Ask a Counselor

Which Careers Match Your Skills?

[Download Worksheet \(PDF\)](#)

One way to begin your search for a career is to think about the things you are good at doing and then find careers that match your skills.

In the list below, select all of the things you are good at and enjoy doing. Then click the "Show Me the Results" button to see some careers that may interest you.

I am good at:

- | | |
|---|--|
| <input type="checkbox"/> Working with my hands | <input type="checkbox"/> Working with numbers |
| <input checked="" type="checkbox"/> Building and fixing things | <input type="checkbox"/> Studying |
| <input type="checkbox"/> Solving problems and puzzles | <input type="checkbox"/> Working with machines and tools |
| <input type="checkbox"/> Singing, acting, dancing, or playing music | <input type="checkbox"/> Being creative |
| <input type="checkbox"/> Speaking or performing in front of others | <input checked="" type="checkbox"/> Helping people |
| <input type="checkbox"/> Helping people feel better | <input type="checkbox"/> Teaching |
| <input type="checkbox"/> Leading projects and people | <input type="checkbox"/> Selling things |
| <input type="checkbox"/> Being in charge of people | <input checked="" type="checkbox"/> Working with people |
| <input type="checkbox"/> Being organized | <input type="checkbox"/> Following directions |
| <input type="checkbox"/> Learning about history and geography | <input type="checkbox"/> Caring for others |
| <input type="checkbox"/> Taking industrial technology classes | |

Start Over



Career Planning

Which Careers Match Your Skills? The Results

Career Planning Checklists

Find Careers

- Career Clusters Activity
- **Which Careers Match Your Skills?**
- Career Search
- Career Videos
- Hot Jobs for the Future
- It's Not All About Money
- Schools for Your Career

Get Experience

Explore Salary and Pay

Preparing for School

Paying for School

Self-Assessments

Ask a Counselor

Because you are good at these activities:

- Working with your hands
- Working with machines and tools
- AND/OR
- Building and fixing things

• Helping people solve problems

- Helping people feel better
- AND/OR

• Teaching people how to do things

• Working with numbers

- Being organized
- AND/OR

You may enjoy these careers:

Carpenter
Chef
Electrician
Engineer
Firefighter
Mechanic
Pilot
Plumber
Truck driver

Chiropractor
Coach
Counselor
Hygienist
Librarian
Nurse
Nutritionist
Paramedic
Teacher
Therapist
Trainer

Administrative assistant
Bank teller
Bookkeeper
Court reporter
Data entry specialist
Desk clerk
File clerk
Payroll clerk



Career Planning

Career Planning Checklists

Find Careers

- Career Clusters Activity
- Which Careers Match Your Skills?
- Career Search
- Career Videos
- Hot Jobs for the Future
- It's Not All About Money
- Schools for Your Career

Get Experience

Explore Salary and Pay

Preparing for School

Paying for School

Self-Assessments

Ask a Counselor

Find Careers

Explore the limitless options.

Select a career that is compatible with your outlook and your vision of the future.

► Career Clusters Activity

View career categories, prioritized just for you, based on your interests and abilities.

► Which Careers Match Your Skills?

Think about the things you are good at doing, then find careers that match those skills.

► Career Search

Look up careers that interest you and read what each one is all about.

► Career Videos

Take a peek at what you may be doing when you're on the job.

► Hot Jobs for the Future

Discover

► It's Not

Choose a

► Schools

Find the b

BEGIN WITH THE END IN MIND

Links to My Next Move /ONet - National Database of Careers to see average wages for your career choice

Also:
MySmartBorrowing.com

Career Planning

Career Planning Checklists

► Find Careers

- Career Clusters Activity
- Which Careers Match Your Skills?
- Career Search
- Career Videos
- Hot Jobs for the Future
- It's Not All About Money
- Schools for Your Career

Career Search

Explore careers that interest you at My Next Move. Find out what skills you need to succeed, as well as the career outlook.

► [Go to My Next Move](#)

My Next Move lets you explore careers in up to three different ways. If you have a specific keyword in the search box. Or select from the dropdown menu to view careers within the ca

? Want to Know More?

Check out these other good career searches on the Web:

What do you want to do for a living?



"I want to be a ..."

"I'll know it when I see it."

"I'm not really sure."



Search careers with key words.

Describe your dream career in a few words:

Examples: doctor, build houses

Search



Browse careers by industry.

There are over 900 career options for you to look at. Find yours in one of these industries:

Administration & Support Services

Browse



Tell us what you like to do.

Answer questions about the type of work you might enjoy. We'll suggest careers that match your interests and training.

Start

KNOWLEDGE

SKILLS

ABILITIES

EDUCATION

JOB OUTLOOK

EXPLORE MORE

SALARY:



Check out my state

PERSONALITY

TECHNOLOGY

Research the Career

Know what's expected and what you'll EARN

Schools From A to Z

Want to learn more about the university you've had your eye on since you were a kid? Well, you're at the right place.

The College Board's College QuickFinder provides details about 2- and 4-year colleges in the United States that offer an associate or bachelor's degree.

[Search for Colleges Now!](#)

How Does It Work?

Browse the alphabetical listings to find the school you're interested in. And select one of these features:

- **Profile**—Get a snapshot of the school: the student body, the size and location, the cost, and more.
- **Am I on Track?**—Find out if you meet the school's admissions requirements.
- **How do I Stack Up?**—Compare yourself with students who have been accepted and are currently attending.
- **Find Similar**—Find schools similar to the one you're investigating (based on user search data).

The College QuickFinder has many more features than these, so take some time to explore. Let us know if you decide if the school is a good fit for you.

Searching for School Info

bigfuture

By The College Board

[Sign up](#) | [Sign in](#)[Get Started](#) | [Find Colleges](#) | [Explore Careers](#) | [Pay for College](#) | [Get In](#)[Make a Plan](#)

Not sure where to start?
Go to College Search
step-by-step, an
interactive guide.

You have
3,854 college options. Choose a category on the left to find the right ones for you. We'll help along the way.

King's College

Wilkes-Barre, PA

[+ Add to My College List](#) See if you're on track Compare colleges Print complete college profile

At a Glance

[Deadlines](#)[Majors & Learning Environment](#)[Campus Life](#)[Applying](#)[Paying](#)

For International Students

MORE TO EXPLORE

Students who viewed this college also viewed these:

[See similar colleges](#)

A small, 4-year, private college of business and liberal arts college. This coed college is located in a small city in an urban setting and is primarily a residential campus. It offers certificate, associate, bachelor's and master's degrees.

www.kings.edu

Quick Facts

Are you on track?

See if you're set to meet this college's requirements — and how you can get there.

[Go to Academic Tracker](#)

Does this college have what you want and need?

1. Go to [College Search](#)
2. Identify what's important
3. Check back to see how this college compares

Compare Information to find what fits YOU

Types of Education:

Your career choice determines the type of education required

Length of Programs

- **Certificate** Months to 2 years
- **Apprenticeship** 2 to 3 years
- **Associates Degree** 2 years
- **Bachelors Degree** 4 years
- **Masters Degree** 6 years
- **Professional Degree** 7 to 9 years
- **Doctoral Degree** 8 to 10 years +

Degree programs are divided into undergraduate, graduate, and professional levels



Look at Several and the Acceptance Policies



Wish List school – highly competitive

- Typically small selective colleges with specific evaluations
- Grades, tests, activities, personal statements, experiences
- Interviews and individual talents
- Deadlines for applications and timed responses

Reality School – good possibility / competitive

- Typically large, public state university systems
- Holistic evaluation: Considers everything about the student as a whole and uses a calculated process
- May have deadlines and timed responses

Safety Net School – likely and probable acceptance

- Community College, Proprietary Schools
- Open Access Evaluation / Rolling Admission
- Straight forward, basic requirements
- Broader deadlines, evaluate as apps are received

Visit and APPLY TO MORE THAN ONE to Compare!

Source: The College Board.org





Academic Differences to Consider

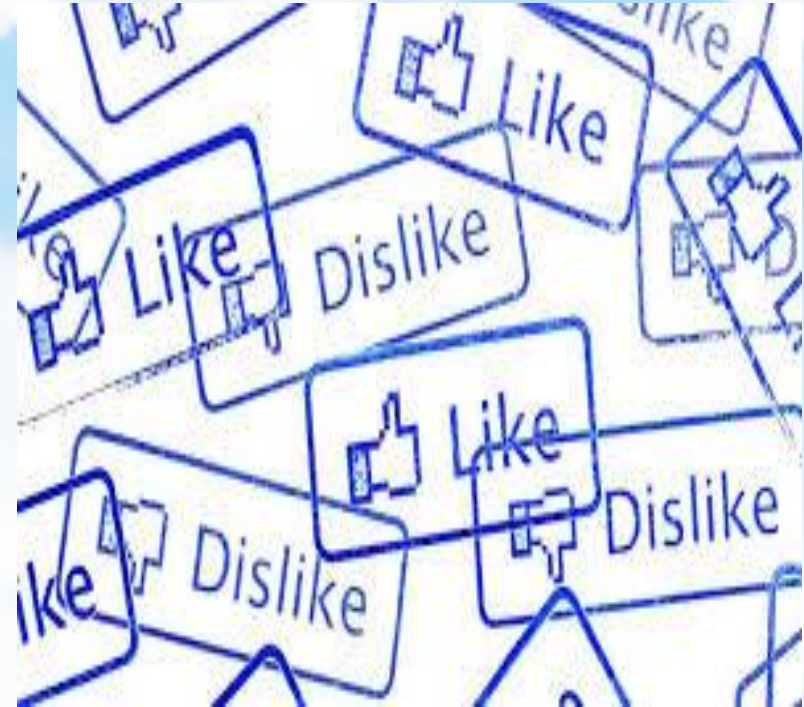
- Minimum Grade Point Averages (GPA)
- Pre-requisite HS courses for your major
- SAT, ACT Test scores - optional or required
- Placement Exams
- Length of programs and course structure
 - » Several months to several years
 - » **Course descriptions, requirements – check degree structure**
 - Identify strong and weak areas, know before choosing
- Transfer options to continue education
- Application extras - minimal or additional requirements
 - » Essays – question or personal statement; Interview or no requirements
 - » Transcripts and/or mid year grades
 - » Recommendations
 - » Job Shadowing – test it



Personal Differences to Consider

Match your success style

- Location – VISIT campuses!!
 - » City, Urban, Rural
- Class size - small to large
- Faculty to Student ratio
- Services
 - » Counseling, Tutoring
 - » Study Groups
 - » **Career Services**
- Campus Activities
 - » Clubs, Student Center, Recreation
- Food
- Living options
 - » Dorm, Commute, Cars



Admissions Review: Application Types

- **Institutional Applications or other Forms**
 - » Specific to that school
 - » Online or paper - normally online preferred
 - » Fees, but may be waived if filed online, attending an Open House, or eligible for a waiver – ask!
- **Common Application- www.commonapp.org**
 - » Hundreds of schools accept the same common application
 - » Eliminates repeating info
 - » Check if your school requires any additional information
 - » Fees, but may be eligible for a waiver



Eligibility vs Selection

Schools usually have their own criteria and are looking at what the Student can contribute to their campus

- » **Rigor of courses in HS to prepare for career choice**
 - Even if grades are slightly lower than would be achieved with lower level courses
- » **Test Scores in some cases**
- » **AP courses affiliated with a campus**
- » **Activities, Talents, Leadership, Responsibility**
- » **Community Service**
- » **Social Media – keep it clean and respectable!**
- » **Other things about you - tell your story**
 - Essay, Resume, Profile



Essays

A measure of writing ability and a window into a student's background

- Don't fear Essays
 - » The chance to shine
- Research or ask what kind of questions the College might have
- Write or practice early, go back and rewrite
 - » Have someone you trust review
- Provide what is asked for - not more, not less
- Tweak essays to meet duplicate requests rather than start over
 - » Be sure to answer the question or address the topic
 - » Ask family and friends to recall how you met the questions - sometimes you forget!
- Show, don't tell, be concise, consider it a face to face talk
 - » Get the point, then personalize through examples



Early Decision vs Early Action



- **Early Decision**
 - » If accepted, school expects you to commit and withdraw other applications
 - » Ask about financial aid - determine if you can afford it
- **Early Action**
 - » If accepted, not binding - can commit but still consider other options
- **Financial Aid exceptions**
 - » Decisions can be changed if deemed unaffordable. review carefully with timing of choices
 - » Use Net Price Calculators
 - » Attend Financial Aid Night



Research Price



Review Financial Aid Webpages

- » What are the costs to attend?
- » What internal scholarships are available?
- » Does the School participate in Financial Aid Programs?
- » Does the school have a Tuition Payment Plan?
- » What can you and your family afford to contribute?
- » **Does the cost match my potential salary?**
- » **THERE IS AN OPTION FOR EVERYONE !**
- » USE Net Price Calculator – on the Fin Aid page
 - » The Higher Education and Opportunity Act (HEOA) of October 2011 requires schools to offer a net price calculator on their Web sites to determine estimated costs

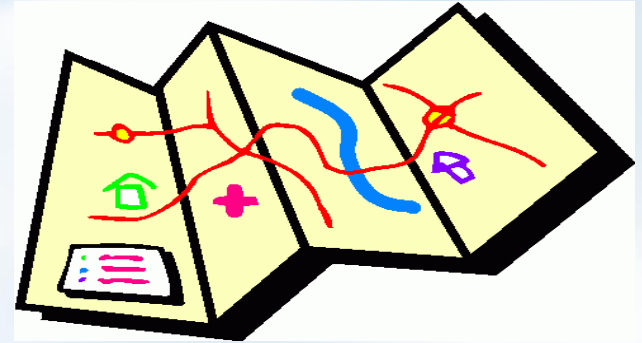


INDIRECT Costs - *the extras not included in Financial Aid*

Dorm accessories, personal expenses...



Don't forget travel..



Sleep



Eat



Wash



Study



Organize



Relax



Collegiate Stuff

KNOW YOUR DEADLINES!!

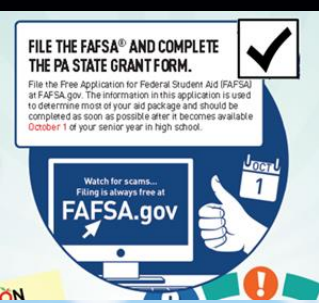
Don't have a calendar: www.timeanddate.com -- print one!

- Admission Applications
- Requesting HS Transcripts
- Requesting recommendation letters at HS
- Commitment decisions
- Deposits to hold your spot
- Housing choices - dorms or other types
- Financial Aid Forms
 - » FAFSA, State Grant, CSS Profile, Internal FA forms
- Scholarships
- Award acceptance
- Bills for balances



Start the process with FAFSA

Free Application for Federal Student Aid



The Department of Education Form that uses personal family information to calculate a Financial Strength Number (EFC) that determines the amount of Gift Aid a student is eligible to receive

- » Driving factors: Income, Household Size and Ages of parents
- Used by Schools, the State and some Scholarship Organizations
- Must be completed each year student attends school, by the deadlines

FAFSA.gov (.gov!!)

Federal Student Aid
An OFFICE of the U.S. DEPARTMENT of EDUCATION

PROUD SPONSOR of
the AMERICAN MIND®

FAFSA®
Free Application for Federal Student Aid



Home



About Us



FSA ID



StudentAid.gov



Help

SEARCH

English | Español

Get help paying for college

Submit a Free Application for Federal Student Aid (FAFSA)



New to the FAFSA?

Start A New
FAFSA

Returning User?

- Make a correction
- Add a school
- View your Student Aid Report (SAR), and more...

Login

FILE THE FAFSA® AND COMPLETE
THE PA STATE GRANT FORM.



File the Free Application for Federal Student Aid (FAFSA) at FAFSA.gov. The information in this application is used to determine most of your aid package and should be completed as soon as possible after it becomes available October 1 of your senior year in high school.

Watch for scams...
Filing is always free at
FAFSA.gov



Apply after October 1
of the year prior to
when you will attend
(senior year in HS)

It's the student's
application

- Parent sections

AY 2018-19 will use
2016 tax information

- Prior, Prior year

Electronic Signature:

Create a User ID and Password

NEW - Replaced the "PIN" as of May 2015

Student and One Parent will sign the FAFSA electronically. **each needs a SEPARATE email address and ID/Password**

GET YOUR ID/PASSWORD EARLY

A FAFSA IS NOT COMPLETE UNTIL SIGNED!

You'll use it again for:

- Renewal FAFSA
- FAFSA status and corrections
- Signing a Direct Loan Master Promissory Note (MPN)
- Complete required Entrance and Exit Loan Counseling
- Review Loan History at NSLDS.ed.Gov

The image displays three screenshots from the Federal Student Aid website. The top screenshot shows the homepage with a red circle around the 'FA ID' link in the navigation bar. The middle screenshot shows a page titled 'The FSA ID is your electronic passport to federal student aid online.' with a red circle around the text 'If you're ready, you can [create an FSA ID now!](#)'. The bottom screenshot shows the 'Create a New FSA ID' form with a red circle around the title. The form includes fields for Email, Confirm Email, Username, Password, and Confirm Password, along with checkboxes for age groups and character selection options.

Online State Grant Application

Link off the FAFSA Application
CONFIRMATION Page or at PHEAA.org

Additional questions needed to
determine PA State Grant eligibility.
Completed once, the first year of
school

Based on FAFSA and Cost of
School

PA Aid for attending most out of
state schools is -0- Compare
costs when enrolling out of State

- Help screens are available
for all questions

PHEAA

I want to...
Select and go to...

Search PHEAA:
Enter Search Term

Home College Planning **Funding Opportunities** Partner Access Tools & Resources

State Grant Program **Pennsylvania State Grant Program**

- Prepare
- Apply/Renew
- After You Apply/Renew
- Summer State Grant
- State Grant FAQ
- Documents & Forms

Other Educational Aid

Work-Study Employment

PA-TIP

Aid for Military & PA National Guard

Loan Forgiveness

Apply/Renew Now

A grant is a type of financial aid award that you don't need to repay, as long as you meet all of the eligibility requirements.

Sign In/Create Account to:

- Apply for a State Grant
- View State Grant status
- Update address or school info

Sign In or Create Account

Contact Us
1-800-692-7392

State Grant FAQ

- How do you determine my State Grant award?
- How do I make corrections on my State Grant Form?
- How will I receive my State Grant funds?

Prepare
Before you apply for a Pennsylvania State Grant, find out whether you meet the eligibility requirements and how much money you can expect to receive.

Apply/Renew
To be considered for a Pennsylvania State Grant, you must fill out the FAFSA (Free

Local Intranet



Types of Financial Aid

There is help to pay for education

Funds provided to help families pay for Postsecondary educational expenses include:

GIFT AID:

Grants - Free Money based on Need and Merit

Scholarships - Free Money based on matching the criteria or qualifications

SELF HELP AID:

Federal Student Loans - borrowed money for every student

Federal Parent Loans - Parent(s) apply to borrow funds

Work Study - earned money during the school term

Private Education Loans - borrowed money w/cosigner

Tuition Reimbursement: Employers and Military



Eligibility and Amounts of Aid

Dependent on School Cost and FAFSA

CURRENT Federal Programs, based on NEED:

Pell Grant ----- up to **\$5920** (AY 17/18)

FSEOG Grant ----- up to **\$4000**.

PA State Grants -- up to **\$4378** In State (AY 17/18)

up to \$557 –DE, MA, OH, VT, WV, and DC **Others: \$0**

Work Study - work a job on campus (can be up to **\$2,000**)



CURRENT Federal Programs NOT based on Need:

Federal Direct Student Loans - **\$5,500** 1st year, increases as student progresses

Independent students: \$9,500. 1st year

PLUS Loans - Parent Loans up to the **Cost of Attendance**

If denied: student receives additional \$4000 loan

Other Federal & State Grants

Based on specific situations and criteria

Federal (ref: StudentAid.gov)

Teach Grant

Iraq & Afghanistan Service Grant

Dependents Education Assistance (DEA) Grant - Veteran Affairs

Vocational Rehabilitation Program (students with disabilities)

Americorps - www.americorps.gov

State (ref: PHEAA.org)

Post Secondary Education Gratuuity Program (PEGP)

Partnerships for Access to Higher Education Program (PATH)

Pennsylvania Chafee Education and Training Grant (Foster students)

Blind or Deaf Beneficiary Grant Program

Pennsylvania Targeted Industry Program (PA-TIP)

Pennsylvania State Work Study Program (SWSP)

PA National Guard Education Assistance Program (EAP)



Scholarship search:

Don't miss out on FREE Money

- Start early – and KEEP LOOKING
- Note requirements and Deadlines
 - Only provide what is asked for
 - Recycle Essays - but answer the questions
- Outside scholarships - look everywhere
 - Google Interests, products, companies
- Don't PAY for information (scam..)
 - If you're asked to pay, it's not free money
- School Scholarships
 - Check Fin Aid and Admission websites
- Community Scholarships
 - Check at HS Guidance office - there's many!
- Create a profile for more matching opportunities
 - What's not on the HS transcript
- Small Scholarships ADD UP
- Don't disqualify yourself until IT disqualified YOU
- Don't forget to continue studies!

www.fastweb.com
www.educationplanner.org
www.fastaid.com
www.finaid.org
www.unigo.com
www.scholarships.com
www.scholarship-page.com
www.zinch.com
www.dosomething.org
www.collegeprowler.com
www.studentscholarships.org
www.collegeboard.com
www.collegeanswer.com
www.collegenet.com
MORE....



THE PATH TO PAYING FOR COLLEGE

START

1



RESEARCH, VISIT AND APPLY TO SCHOOLS.

Visit collegecost.ed.gov and MySmartBorrowing.org to see how much a degree will cost at your selected schools and calculate your expected student debt.

EDUCATION PLANNER

Visit Educationplanner.org to fully research school and career options first.

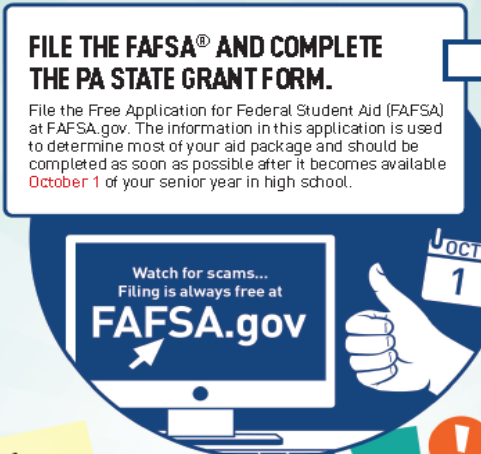
2



SEARCH AND APPLY FOR PRIVATE GRANTS AND SCHOLARSHIPS.

Create an account at Fastweb.com and check with school counselor and local organizations.

3

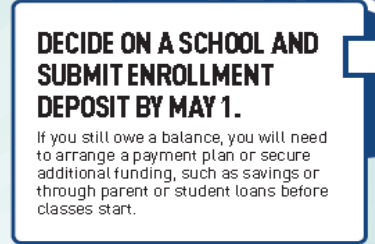


FILE THE FAFSA® AND COMPLETE THE PA STATE GRANT FORM.

File the Free Application for Federal Student Aid (FAFSA) at FAFSA.gov. The information in this application is used to determine most of your aid package and should be completed as soon as possible after it becomes available **October 1** of your senior year in high school.

Watch for scams... Filing is always free at FAFSA.gov

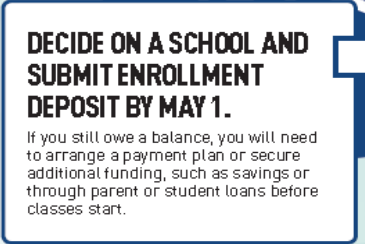
4



COMPARE FINANCIAL AID AWARD LETTERS.

It is very important you understand how much of your aid package is free money, how much needs to be repaid, and how much you will still owe each school.

5



DECIDE ON A SCHOOL AND SUBMIT ENROLLMENT DEPOSIT BY MAY 1.

If you still owe a balance, you will need to arrange a payment plan or secure additional funding, such as savings or through parent or student loans before classes start.

Review and consider all of your options.

Sometimes the best fit is not your first choice



Buy an
education, Not a
school

Pick a school
that is
affordable and
meets your
needs

“Reverse-Engineer” Your Happiness!

- ✓ *What kind of lifestyle do I want?*
- ✓ *Where do I want to live?*
- ✓ *What kind of working conditions do I want?*
- ✓ *What careers will get me where I want to go?*
- ✓ *What colleges will get me into the career I want?*
- ✓ *What should I be doing right now to prepare?*



Begin with the end in mind!

MySmartBorrowing.org

Become a smart borrower so you are **PREPARED** for the future.

GET STARTED >



What state would you like to work in?
Pennsylvania, Philadelphia Region

What career are you interested in?
Start typing career to view suggestions

Let us help you find your career.
Choose your CATEGORY of interest

CATEGORY
Farming, Fishing, and Forestry
Food Preparation and Serving Related
Healthcare Practitioners and Technical
Healthcare Support
Installation, Maintenance, and Repair
Legal
Life, Physical, and Social Science
Management
Office and Administrative Support
Personal Care and Service

View your potential salary based on your career choice!



How much schools might actually cost!

\$	771.00	
\$	121.00	
\$	0	
payment is about 10.23% of your expenses.)	\$	303.00
	\$2,961.00	
	\$122.00	

CONGRATULATIONS! YOU ARE UNDER BUDGET!

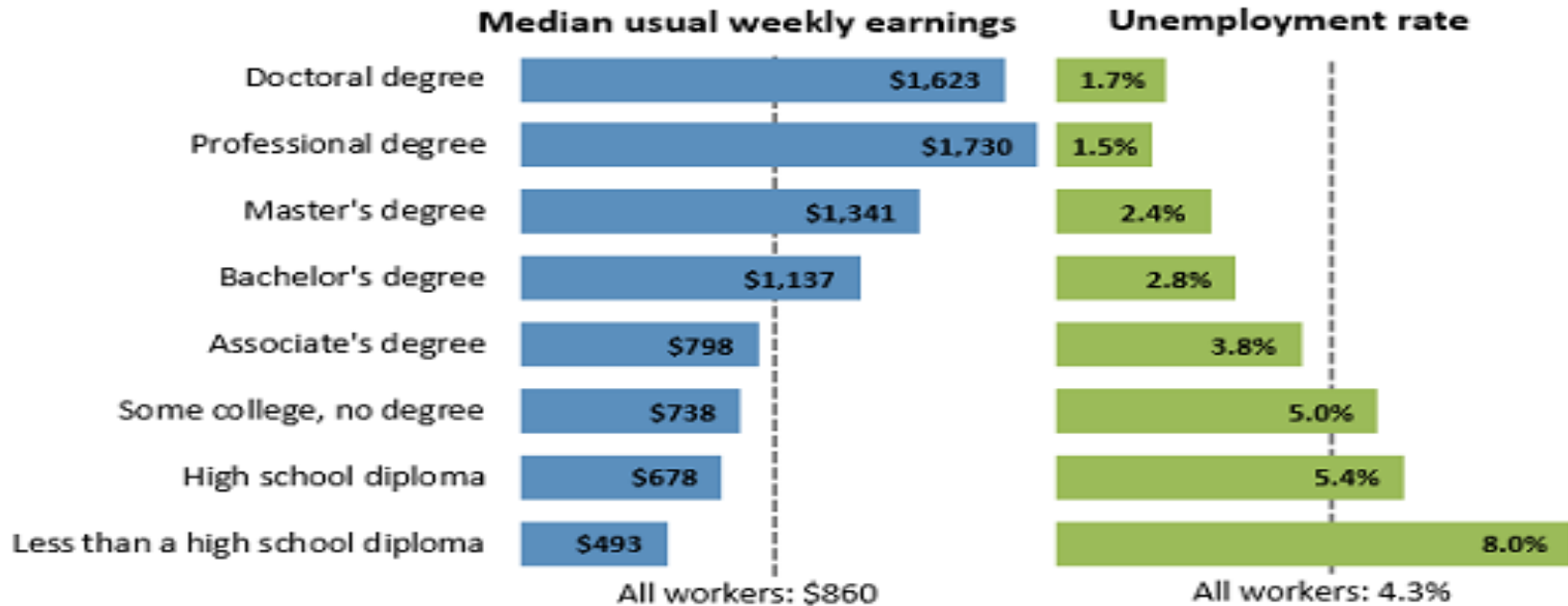
Calculate your possible future budget!

This interactive tool gives you information you can use to make smart decisions about career choices and **PAYING** for college.

MySmartBorrowing.org

It Pays to have an education

Earnings and unemployment rates by educational attainment, 2015



Note: Data are for persons age 25 and over. Earnings are for full-time wage and salary workers.

Source: U.S. Bureau of Labor Statistics, Current Population Survey

Thanks and Best Wishes

Questions?

